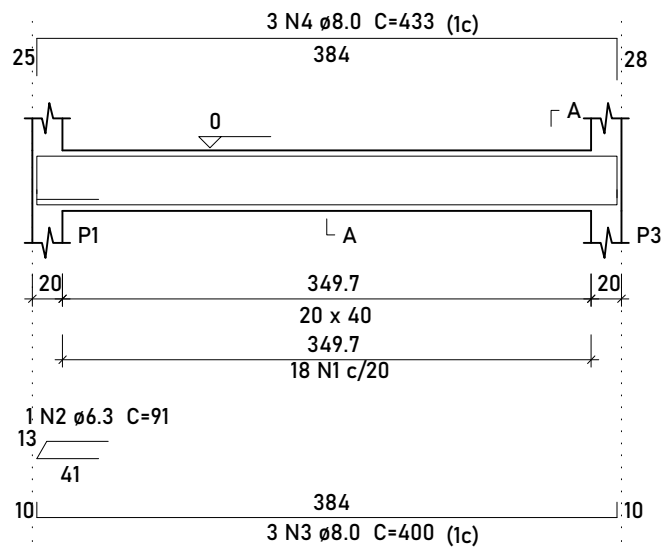
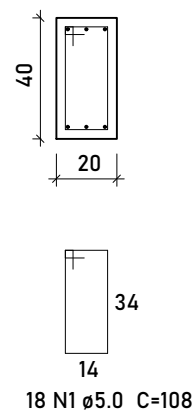


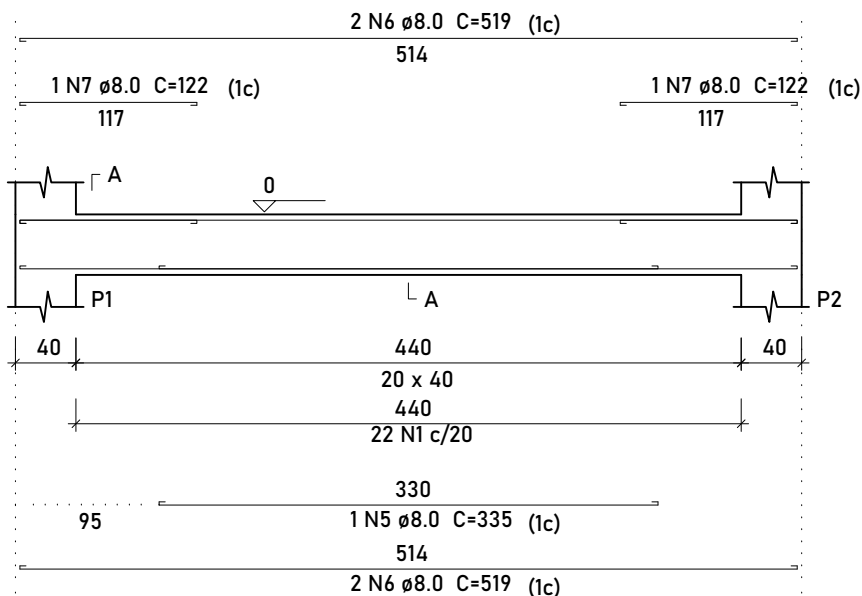
V1
ESC 1:50



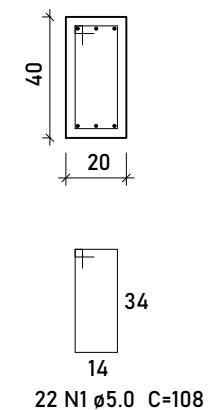
SEÇÃO A-A
ESC 1:25



V2
ESC 1:50



SEÇÃO A-A
ESC 1:25



Relação do aço

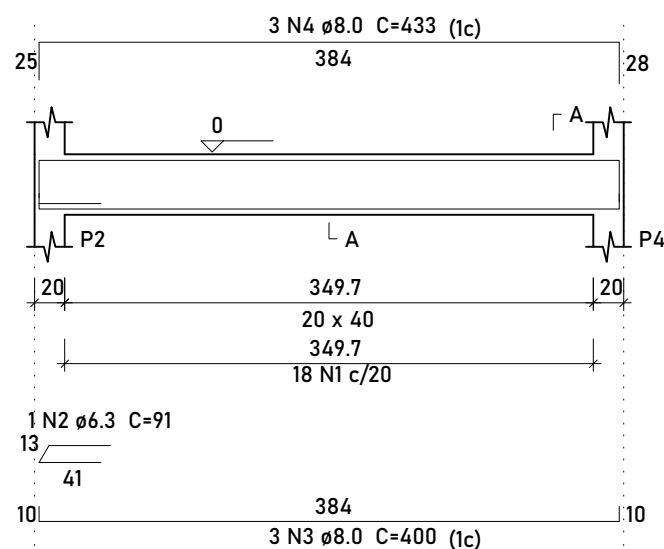
AÇO	N	DIAM	Q	UNIT (cm)	C.TOTAL (cm)
CA60	1	5.0	84	108	9072
CA50	2	6.3	2	91	182
	3	8.0	6	400	2400
	4	8.0	6	433	2598
	5	8.0	1	335	335
	6	8.0	4	519	2076
	7	8.0	2	122	244
	8	8.0	3	594	1782
	9	8.0	2	187	374
	10	8.0	2	658	1316

Resumo do aço

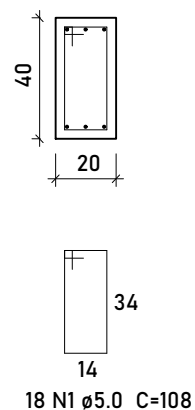
AÇO	DIAM	C.TOTAL (m)	PESO + 10% (kg)
CA50	6.3	1.9	0.5
CA60	8.0	111.3	48.3
CA60	5.0	90.8	15.4
PESO TOTAL			
CA50	48.8		
CA60	15.4		

Vol. de concreto total (C-25) = 1.52 m³
Área de forma total = 18.99 m²

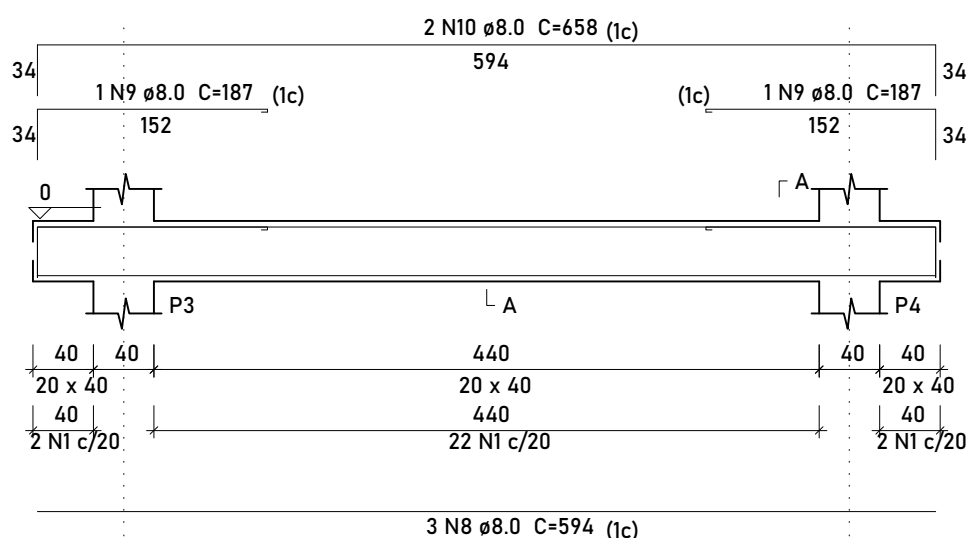
V3
ESC 1:50



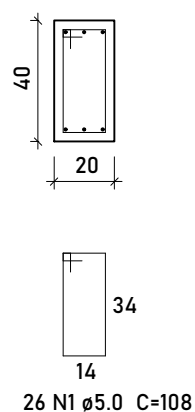
SEÇÃO A-A
ESC 1:25



V4
ESC 1:50



SEÇÃO A-A
ESC 1:25



PREFEITURA MUNICIPAL CAMPO DO BRITO
CNPJ: 11.266.975/0001-82



MARCELO RODRIGO COSTA GUIMARÃES 2716011168/D-SE

TÉCNICO RESPONSÁVEL CREA VISTO SE

IKARO S. BOMFIM 2708720899/TD-SE

TÉCNICO RESPONSÁVEL CREA VISTO SE

FUNDO MUNICIPAL DE SAÚDE - CAMPO DO BRITO - SERGIPE

PROPRIETÁRIO

SECRETÁRIA MUNICIPAL DE SAÚDE
POVOADO SERRA DAS MINAS - CAMPO DO BRITO/SE

DATA 04/2019	PROJETO PROJETO ESTRUTURAL	NOME DO ARQUIVO: PEST_CPB_R00		
ESCALA INDICADA	PLANTA VIGAS BALDRAMES	REV 00	BLOCO -	FOLHA 04/08